

Gen 1

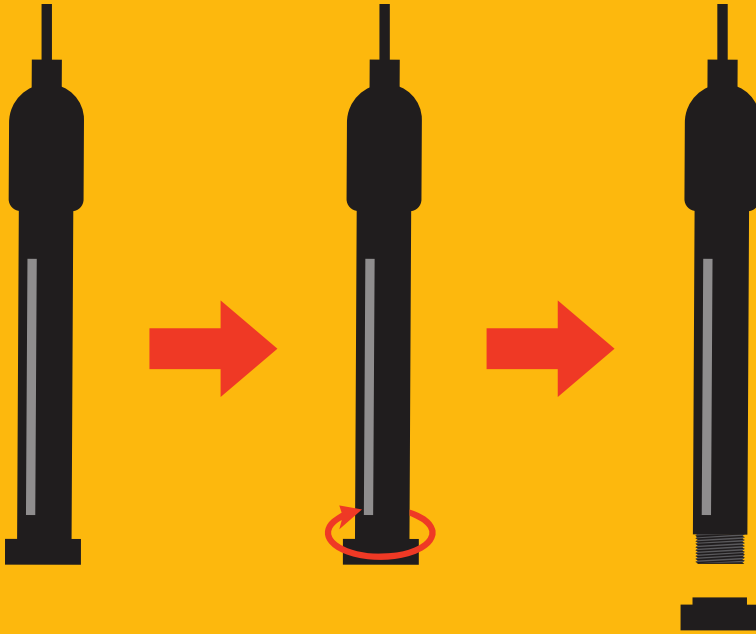
Dissolved Oxygen Maintenance Kit

Revives an old or dried out D.O. probe



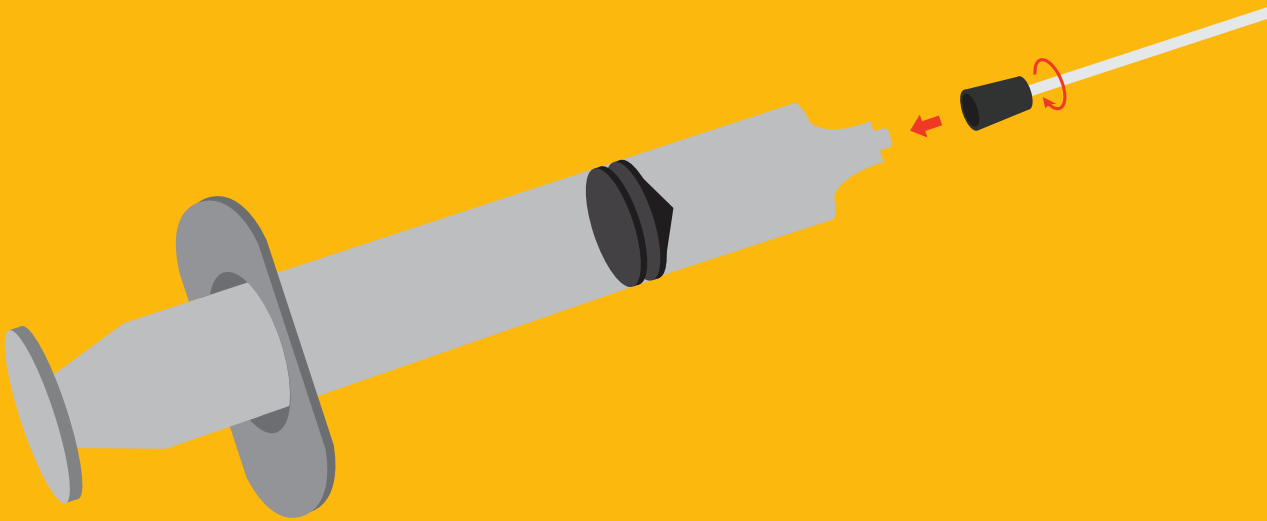
Step 1

Unscrew the old sensing membrane from the tip of the probe and discard.



Step 2

Attach the needle to end of the syringe.



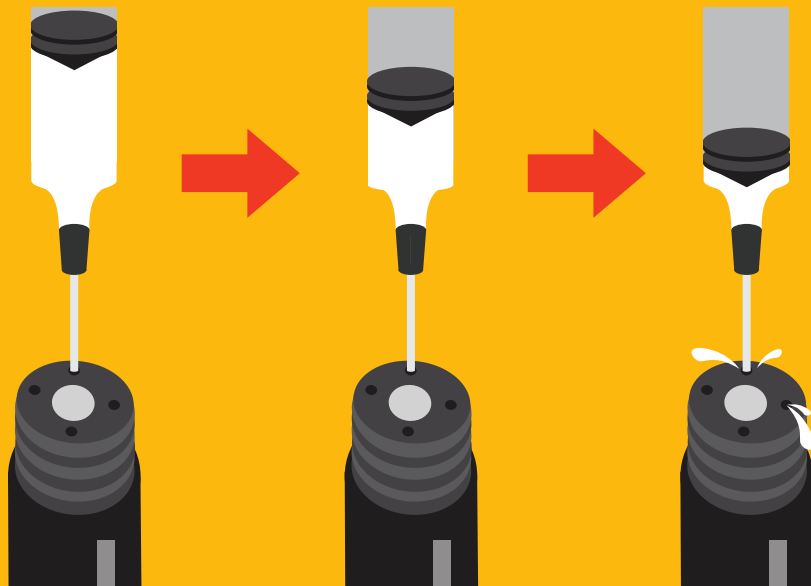
Step 3

Fill the syringe.



Step 4

Insert needle into one of the four holes surrounding the silver cathode. Inject solution until it leaks out of the fill holes.



Step 5

Screw on the replacement pre-membraned cap by threading it onto the probe.

