

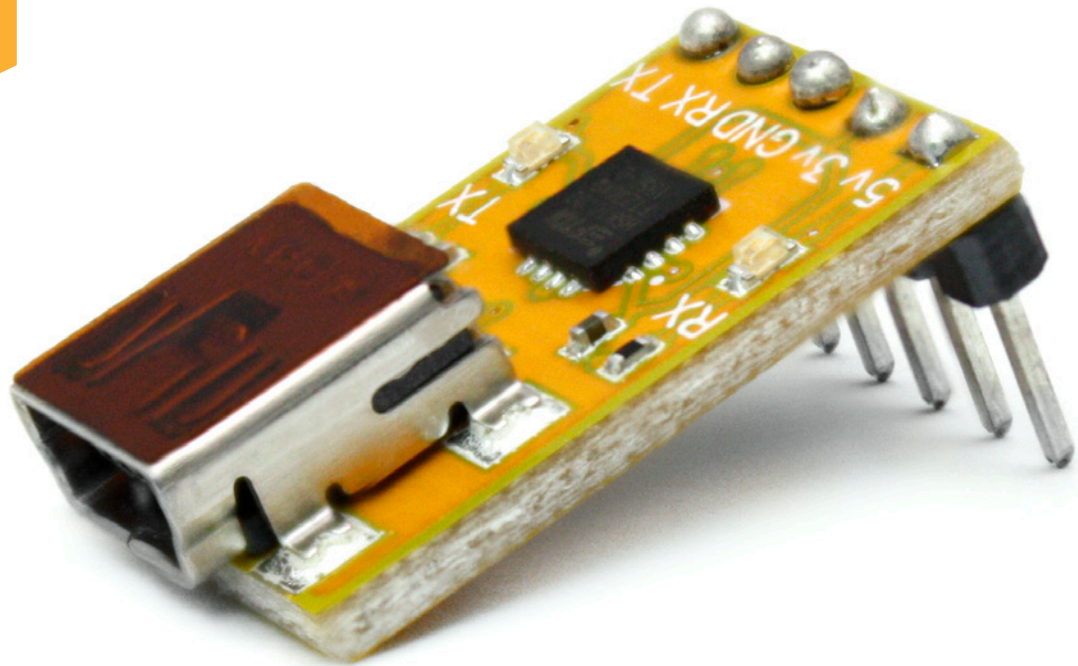
Basic USB to Serial Converter

Revised 8/23/16

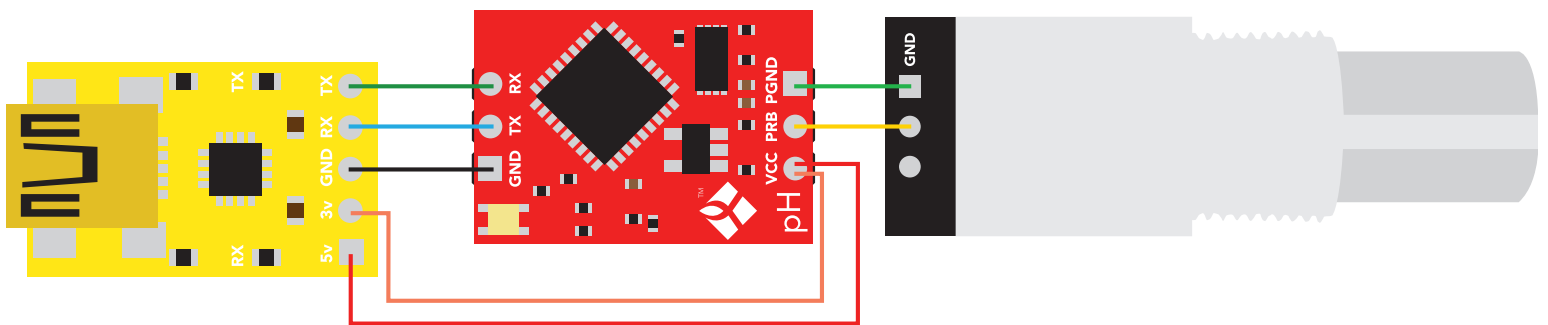
Basic USB to Serial Converter

V 1.3

This is an evolving document
check back for updates.



How to connect an Atlas Scientific™ Basic USB to Serial Converter.



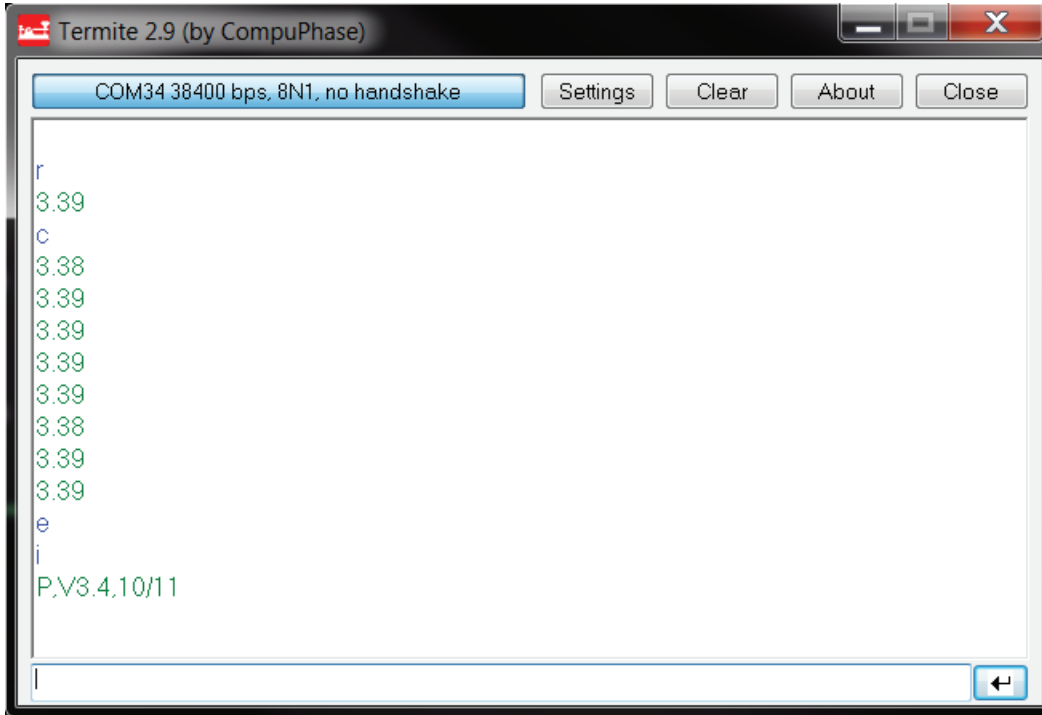
Header pins have a 1mm diameter

*Users Choice: 3.3v or 5v

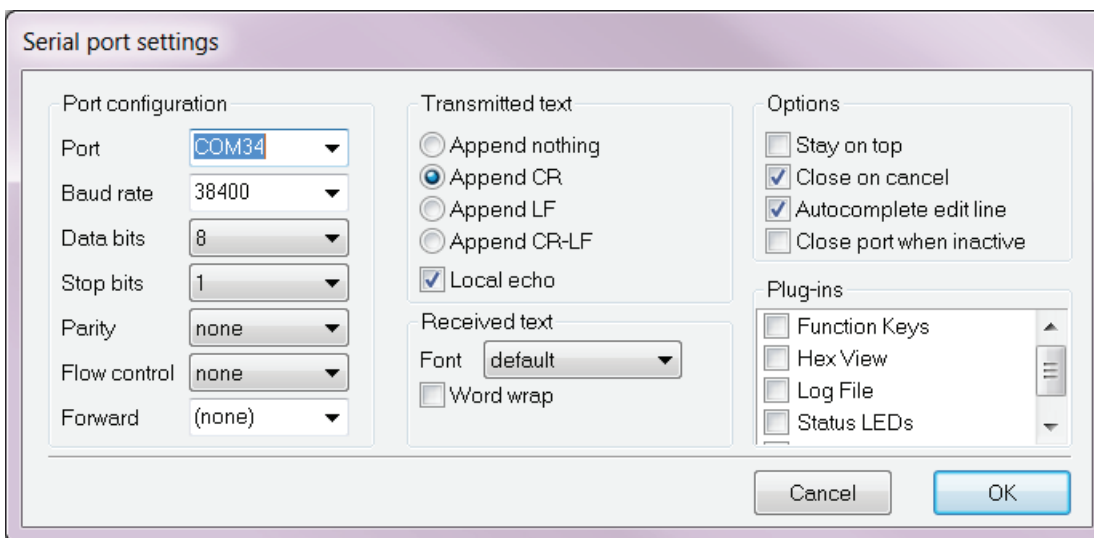
AtlasScientific™

Environmental Robotics

Basic USB to Serial Converter



Example of Termité (terminal emulator).



Port: Choose the COM port that is installed when connecting the Basic USB to Serial Converter.



TM