

Atlas*·i*otTM

Software update guide

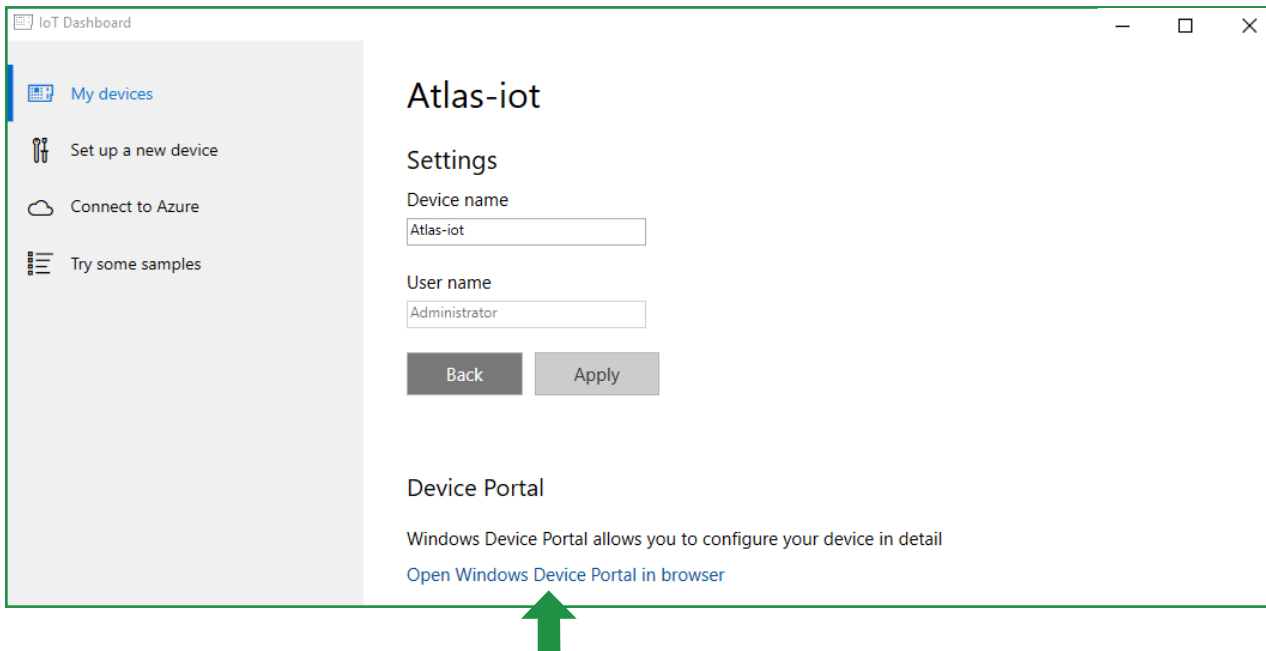
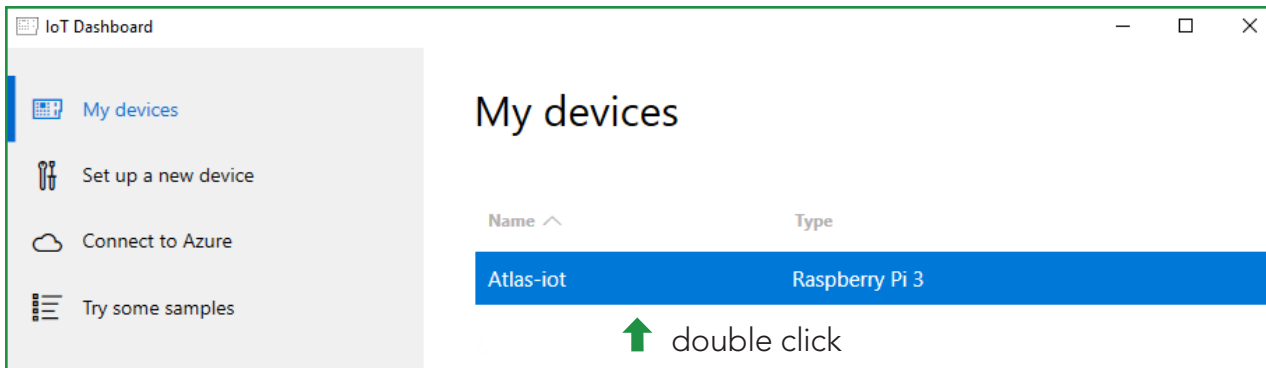
This guide is for users who have already installed both Windows 10 and the Atlas • iot™ software onto a Raspberry Pi; and want to update the software to the current version.

If you need to install Windows 10 and the Atlas • iot™ software onto a Raspberry Pi for the 1st time, please click [HERE](#)

Step 1

Connecting to your device

From within the Windows 10 IoT Core Dashboard software on your desktop, double click on your device's name. This will open the settings to your device.



Click here and a web page will open that will ask you to log into your device.

Step 2 Click the tick

You are now in the device portal (*back end*) of your Raspberry Pi. Click on **Apps > Apps manager** to see a list of applications running on your Raspberry Pi. Locate the application called **"IOTCoreDefaultApplication"** and click the tick button for this application. This will stop the Atlas_iot™ software from running on your Raspberry Pi

Check for updates				
App Name	App Type	Startup	Status	
Connect	Foreground	<input type="radio"/>	Stopped	Actions ▾
IOTCoreDefaultApplication	Foreground	<input checked="" type="radio"/>	Running	Actions ▾
IoTUAPOOBE	Foreground	<input type="radio"/>	Stopped	Actions ▾
atlas_iot	Foreground	<input type="radio"/>	Stopped	Actions ▾
IoTOnboardingTask	Background	<input checked="" type="checkbox"/>	Running	Actions ▾

Step 3 Uninstall the software

Attention

Uninstalling the Atlas • iot™ software will delete all logged data. Atlas Scientific highly recommends exporting all data from your device before applying this step. If you need help exporting your data from your device, please click [HERE](#)

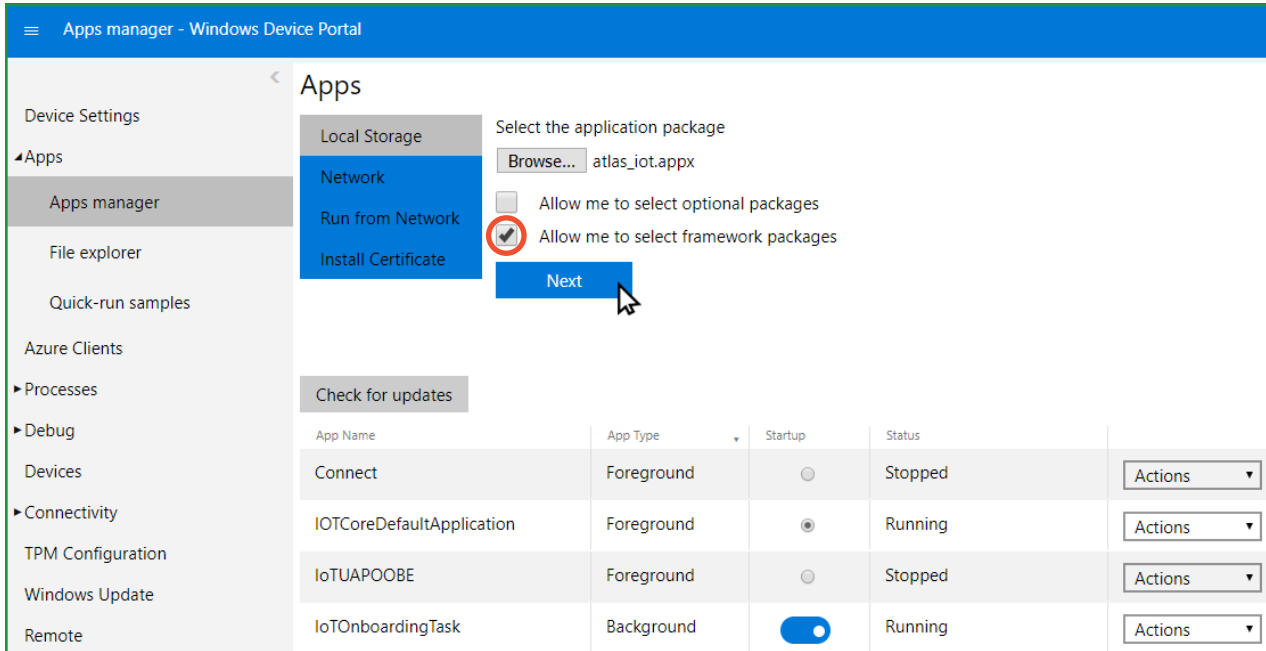
Once the software has stopped running on your Raspberry Pi, you can now choose **"Uninstall"** from the drop down menu. A pop-up message will appear, click OK to continue, after a few seconds **"Atlas_iot"** will be uninstalled from your device.

IOTCoreDefaultApplication	Foreground	<input checked="" type="radio"/>	Running	Actions ▾
IoTUAPOOBE	Foreground	<input type="radio"/>	Stopped	Actions ▾
atlas_iot	Foreground	<input type="radio"/>	Stopped	Actions ▾ Actions Start Uninstall Details
IoTOnboardingTask	Background	<input checked="" type="checkbox"/>	Running	

Step 4 Install Atlas • iot™

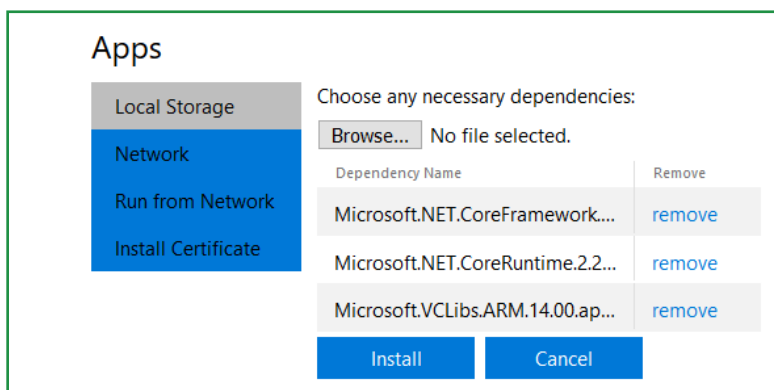
We are ready to install the latest version of the Atlas•iot™ software. If you need to download the latest version of the software, please click [HERE](#)

Once the zip file downloads, extract the files and head back to the **IoT Core Device Portal**. Click on **Apps > Apps manager**. Click Browse, and locate **Atlas_iot_x.x.x.x.appx** from the extracted zip file you just downloaded. **Don't hit install, you're not done yet!**



Three more files are needed for the installation to be complete (they have to be added one at a time).

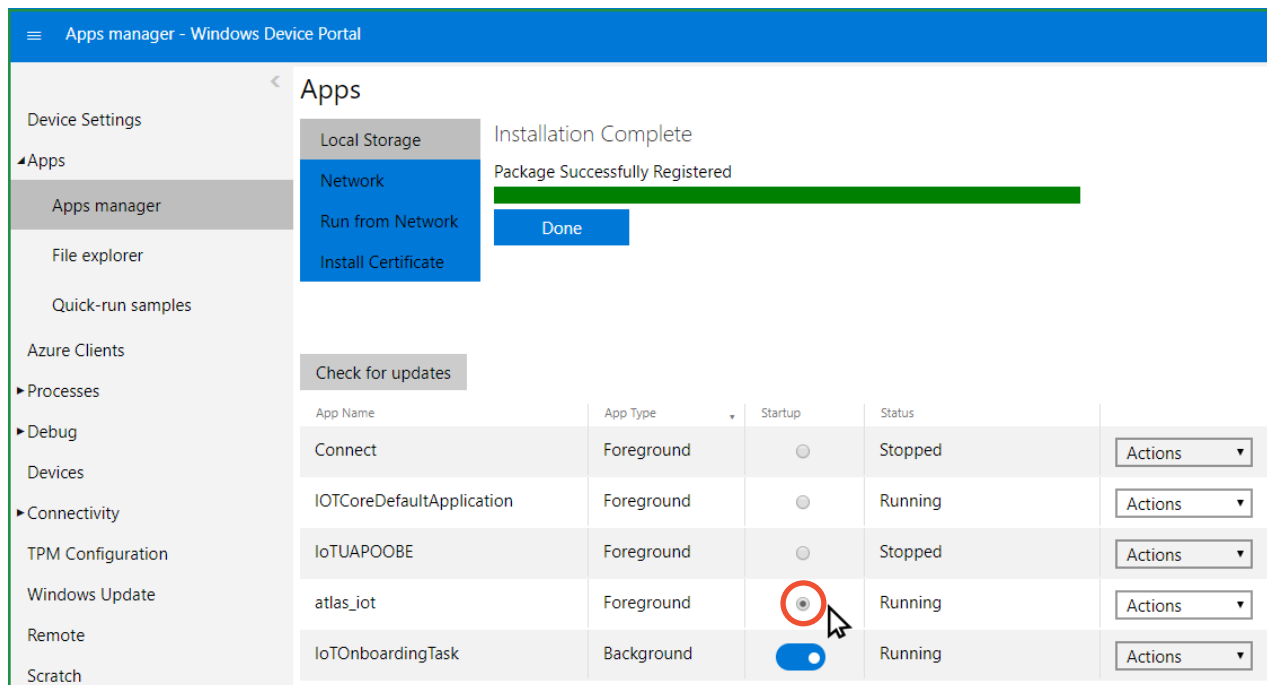
Click the check box that says **Allow me to select framework packages**, click Next and then click Browse (again), go back to your extracted zip file. **Dependencies > ARM >** (here, you will find three *.appx files). Double click the first file, and repeat this process for the remaining two files.



Now, click install. The install process should take ~1 min.

Step 5 Startup

Once the installation is complete the Atlas•iot™ software will be displayed on a list of installed apps. To begin running the software, click the startup button.



Software upgrade complete!